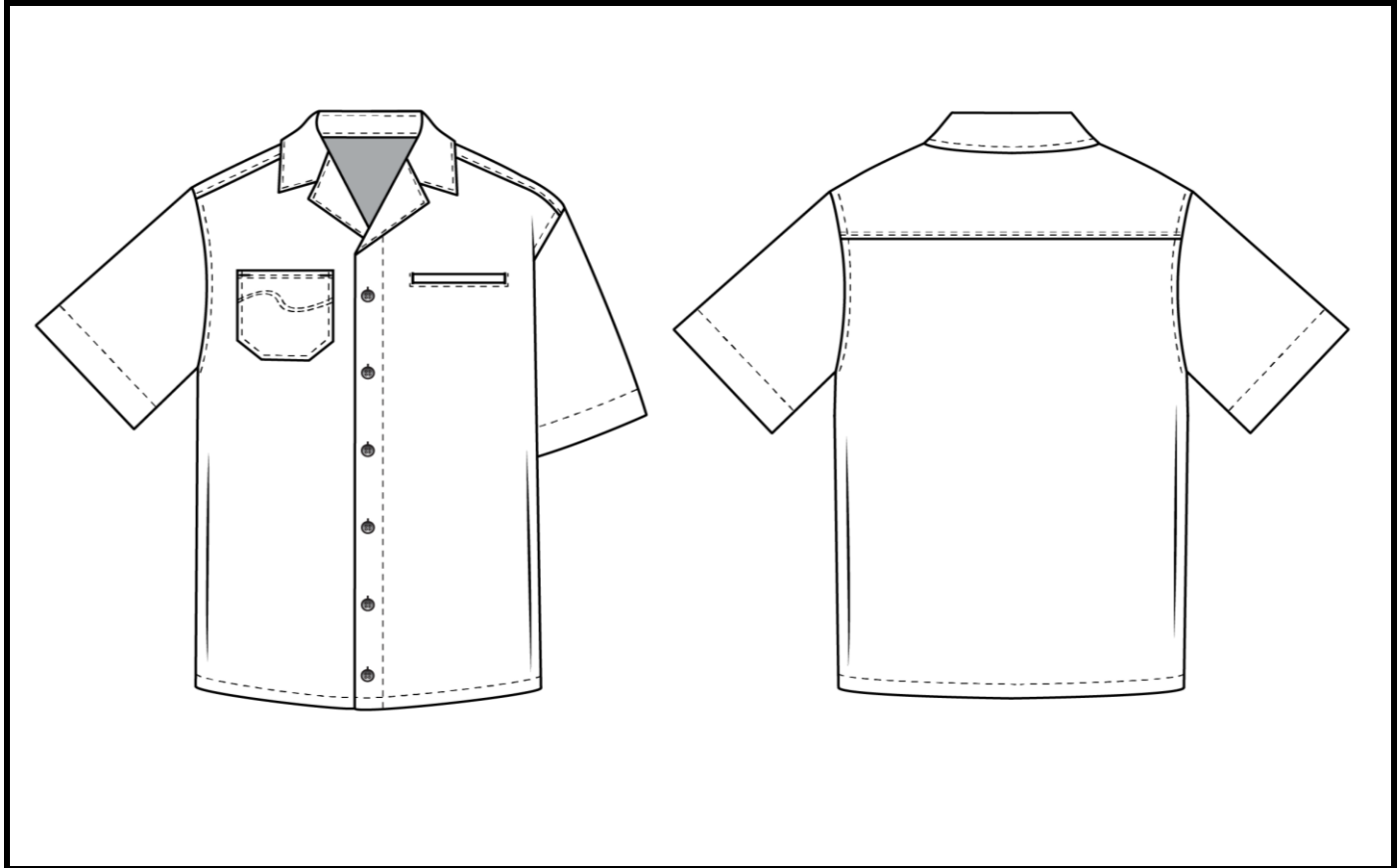


SPECIFICATIONS LEAD SHEET

STYLE NUMBER:	5101	SIZE RANGE:	S-XL
PROTO NUMBER:	1	SAMPLE SIZE:	M
MAIN LABEL:		SEASON:	SS 2023
CONTENT:	53% Modal, 47% Cotton	CATEGORY:	menswear, outerwear
CARE:	Wash in cold, hang dry	DESCRIPTION:	Short sleeve button up shirt



SELF FABRIC:	53% Modal, 47% Cotton	SUPPLIER:	MOOD Fabrics
CONTRAST 1:		SUPPLIER:	
CONTRAST 2:		SUPPLIER:	
CONTRAST 3:		SUPPLIER:	
CONTRAST 4:		SUPPLIER:	
LINING 1:		SUPPLIER:	
LINING 2:		SUPPLIER:	
POCKETING:	53% Modal, 47% Cotton	SUPPLIER:	MOOD Fabrics
INTERFACING 1:		SUPPLIER:	
INTERFACING 2:		SUPPLIER:	
INTERFACING 3:		SUPPLIER:	
TRIM 1:	4-Hole, Plastic button	SUPPLIER:	Wawak Sewing
TRIM 2:	4-Hole, Wood button	SUPPLIER:	Wawak Sewing
TRIM 3:	Arctic Descent hangtag	SUPPLIER:	Shopify
TRIM 4:	Wash and care label	SUPPLIER:	Shopify
TRIM 5:		SUPPLIER:	
TRIM 6:		SUPPLIER:	

LABEL PLACEMENT SHEET

STYLE NUMBER: 5101

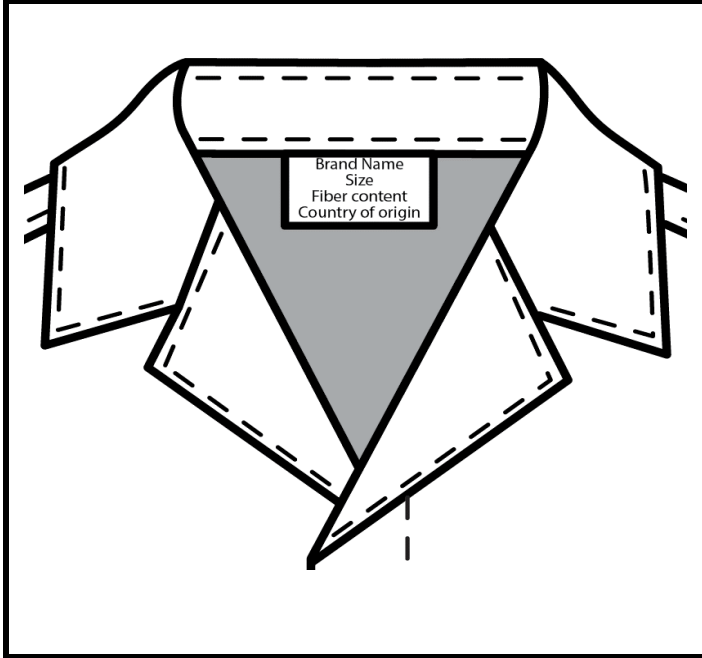
SIZE RANGE: S-XL

PROTO NUMBER: 1

SAMPLE SIZE: M

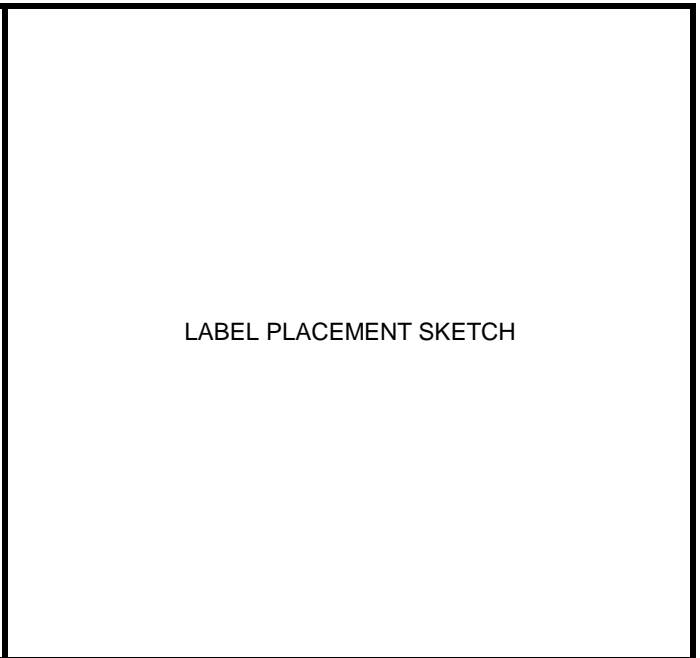
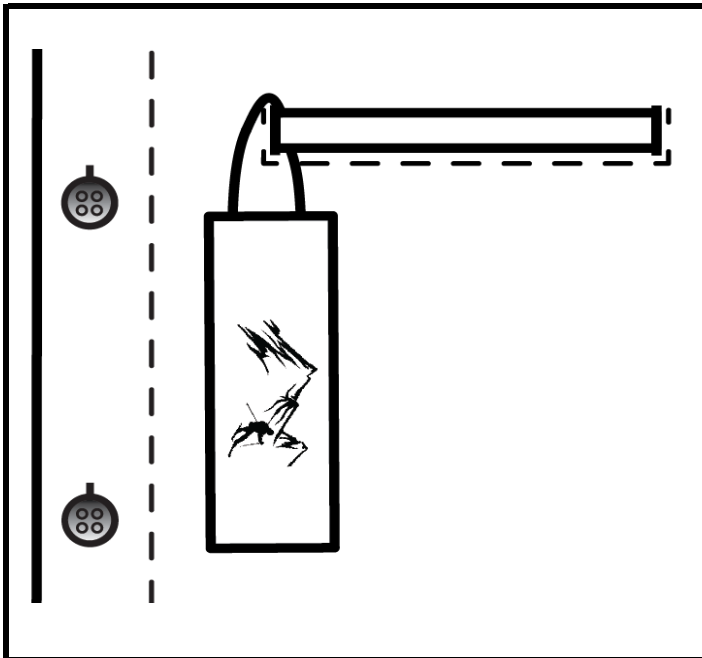
DESCRIPTION: Short sleeve button up shirt

SEASON: SS 2023



LABEL: Brand name, size, fiber content, country of origin
Below collar on CB

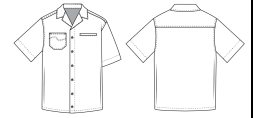
LABEL: Care label
Left side seam 4" above hem



LABEL: Arctic Descent hangtag
Attached to front welt pocket

LABEL:

BILL OF MATERIALS



STYLE #:	5101	FIT TYPE:	Baggy, Boxy	DESIGNER	Isaac Silva
FABRIC:	53% Modal, 47% Cotton	SIZE RANGE:	S-XL	SEASON:	SS 2023
SAMPLE SIZE:	M	STATUS:	Prototype-1		

FABRIC

ITEM	PLACEMENT	SUPPLIER	CONTENT	WIDTH / WEIGHT / SIZE	FINISH	YIELD	COST
SELF FABRIC	<i>Body</i>	<i>MOOD Fabrics</i>	<i>53% Modal, 47% Cotton</i>	<i>57"</i>	<i>garment laundered, 60 min.</i>	<i>2 yds.</i>	<i>\$29.78</i>
BIAS BINDING	-	-	-	-	-	-	-
POCKETING	<i>Front pockets</i>	<i>MOOD Fabrics</i>	<i>53% Modal, 47% Cotton</i>	<i>57"</i>	<i>pre-shrunk</i>	<i>1/2 yd.</i>	<i>\$7.44</i>
THREAD-DTM BODY	<i>Join & overlock</i>	<i>A & E</i>	<i>100% Spun polyester</i>	<i>tex 30</i>	-	<i>1 spool</i>	<i>\$0.99</i>
THREAD-CONTRAST	<i>Topstitch</i>	<i>A & E</i>	<i>100% Spun polyester</i>	<i>tex 90</i>	-	<i>1 spool</i>	<i>\$1.99</i>

HARDWARE

ITEM	PLACEMENT	SUPPLIER	DESCRIPTION	WIDTH	FINISH	YIELD	COST
CENTER FRONT BUTTON:	<i>CF PLKT</i>	<i>Wawak Sewing</i>	<i>4-Hole, Plastic button</i>	<i>24L</i>	-	6	\$0.45
EXTRA BUTTON:	<i>Interior sideseam left side</i>	<i>Wawak Sewing</i>	<i>4-Hole, Plastic button</i>	<i>24L</i>	-	2	\$0.14
BUTTON:	-	-	-	-	-	-	-
BUTTON:	-	-	-	-	-	-	-
ZIPPER:	-	-	-	-	-	-	-

LABELING/ PACKAGING

ITEM	PLACEMENT	SUPPLIER	DESCRIPTION	WIDTH	FINISH	YIELD	COST
HANGTAG	<i>Attached to front welt pocket</i>	<i>Shopify</i>	<i>Arctic Descent Hangtag</i>	<i>2" X 4"</i>	<i>matte</i>	<i>1</i>	<i>\$2</i>
INTERIOR LABEL	<i>Left side seam 4" above hem</i>	<i>Shopify</i>	<i>Wash and care label</i>	<i>1" X 3"</i>	<i>none</i>	<i>1</i>	<i>\$1</i>
	<i>Below collar on CB</i>	<i>Shopify</i>	<i>Brand, Size, Fiber content, Country of origin</i>	<i>1.5" X 1.5"</i>	<i>none</i>	<i>1</i>	<i>\$0.50</i>

FABRIC SWATCHES:



CONSTRUCTION DETAILS SHEET

STYLE NUMBER: 5101

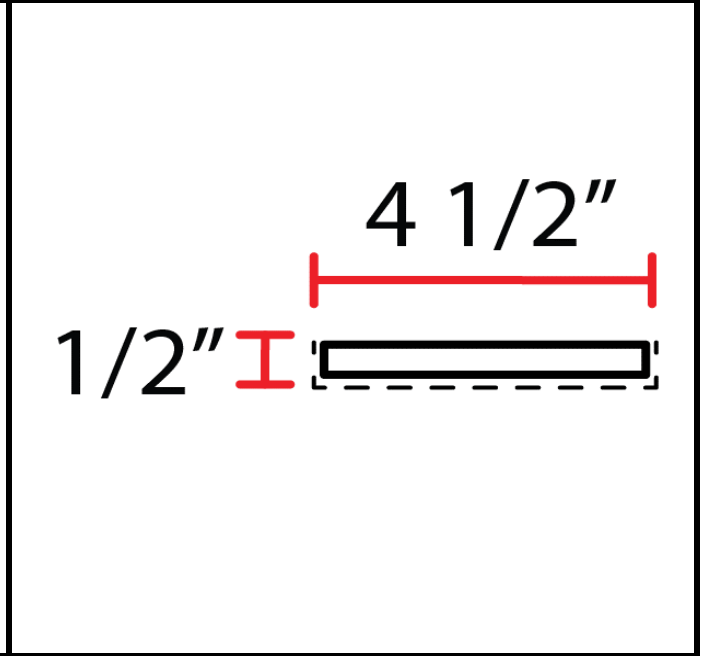
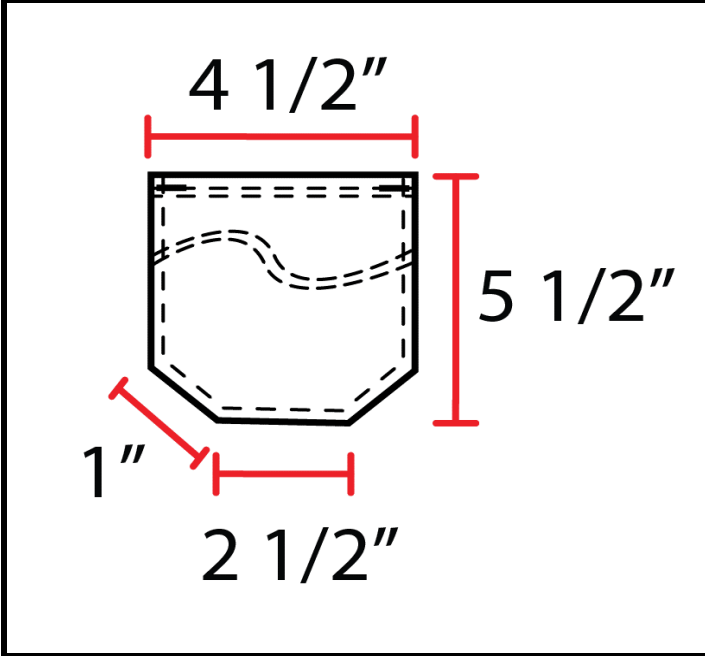
SIZE RANGE: S-XL

PROTO NUMBER: 1

SAMPLE SIZE: M

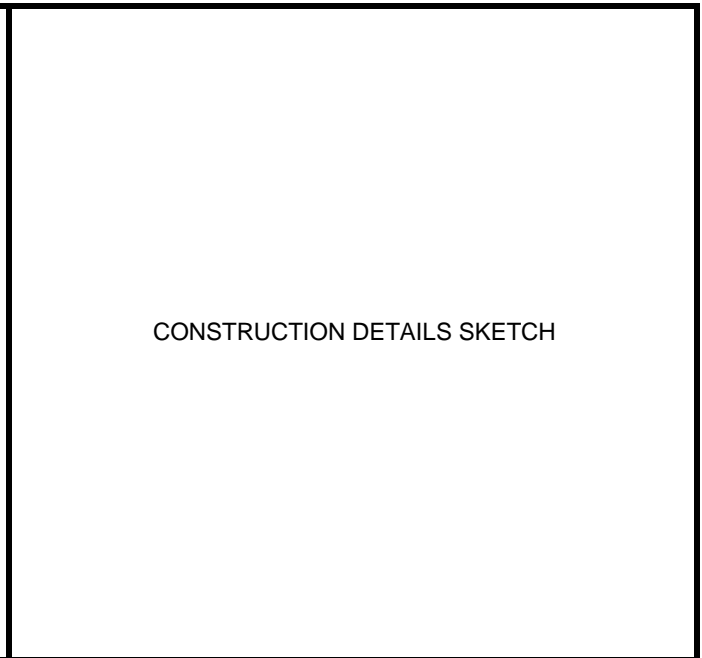
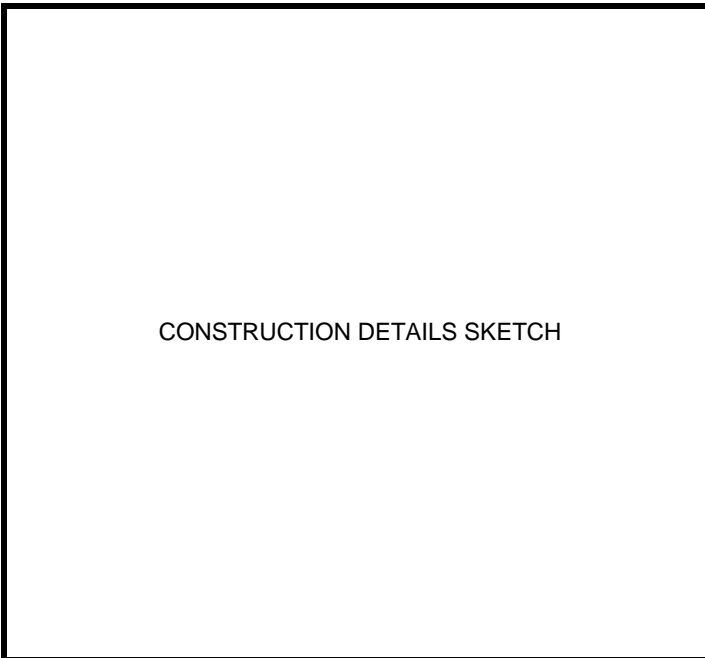
DESCRIPTION: Short sleeve button up shirt

SEASON: SS 2023



CONSTRUCTION DETAIL NUMBER & DESCRIPTION:
Front patch pocket with wave motif topstitching

CONSTRUCTION DETAIL NUMBER & DESCRIPTION:
Front welt pocket



CONSTRUCTION DETAIL NUMBER & DESCRIPTION:

CONSTRUCTION DETAIL NUMBER & DESCRIPTION:

Construction Page

STYLE #: 5101		FIT TYPE: Baggy, Boxy		DESIGNER: Isaac Silva	
FABRIC: 53% Modal, 47% Cotton		SIZE RANGE: S-XL		SEASON: SS 2023	
Cutting Information: 1 way, lengthwise					
Stitches per Inch (SPI) 11 +/- 1 for joining, 8 +/- for topstitching					
AREA	DESCRIPTION	JOIN STITCH	SEAM FINISH	TOPSTITCH	INTER-LINING
FRNT & BCK	join & topstitch	single-needle lock	double-stitched	two needle lock (to match flatfell)	-
FRNT PLCKT	join & topstitch	single-needle lock	double-stitched	1/4"	-
SLEEVES	join	5-thread safety	5-thread safety	1/4"	-
COLLAR	folder-attached	two-needle chain	-	1/4"	FUSIBLE
COLLAR STAND	join & topstitch	single-needle lock	-	3/8"	-
YOKE	form & finish	1/4" two-needle bottom coverstitch			-
BARTACKS	see detail sketches	-	-	1/2"	-
FRONT POCKETS	see detail sketches	single-needle lock		1/4"	-
ARM HOLE	join & topstitch	single-needle lock	double-stitched	1/4"	-
BOTTOM OPENING	hem	single-needle lock	clean finish	1/2"	-
CLOSURES					
BUTTON, FRNT PLCKT	Buttonhole, keyhole	-	clean finish	1/4"	-
BUTTONHOLE	Buttonhole, keyhole	-	-	-	-

COLORWAYS SHEET

STYLE NUMBER: 5101
 PROTO NUMBER: 1
 DESCRIPTION: Short sleeve button up shirt

SIZE RANGE: S-XL
 SAMPLE SIZE: M
 SEASON: SS 2023

MATERIAL	DESCRIPTION	COLORWAY #1	COLORWAY #2	COLORWAY #3	COLORWAY #4
SELF FABRIC:	53% Modal, 47% Cotton	Olive 18-0328 TCX	Soft Chambray 16-4016 TCX	White Alyssum 11-1001 TCX	
THREAD 1:	100% Spun polyester	Olive	Light blue gray	White	
THREAD 2:	100% Spun polyester	Olive	Light blue gray	White	
THREAD 3:					
CONTRAST 1:					
CONTRAST 2:					
CONTRAST 3:					
CONTRAST 4:					
LINING 1:					
LINING 2:					
POCKETING:	53% Modal, 47% Cotton	Olive 18-0328 TCX	Soft Chambray 16-4016 TCX	White Alyssum 11-1001 TCX	
INTERFACING 1:					
INTERFACING 2:					
INTERFACING 3:					
TRIM 1:	4-Hole, plastic button	-	White	-	
TRIM 2:	4-Hole, wood button	Mahogany	-	Olive wood	
TRIM 3:					
TRIM 4:					
TRIM 5:					
TRIM 6:					
EMBROIDERY:					
BEADING:					
APPLIQUE:					
STITCHING:					

SAMPLE TRACKING SHEET

STYLE NUMBER:	5101	SAMPLE SIZE:	M
DESCRIPTION:	Short sleeve button up shirt	SEASON:	SS 2023

TYPE OF SAMPLE:	First prototype	DATE SAMPLE RECEIVED:	6/27/2022
FIT NOTES:	Armhole is too large reduce to 16 1/4"	APPROVED?	YES NO
CONSTRUCTION NOTES:	Neck drop is too long, adjust to 6 3/8"	APPROVED?	YES NO
MATERIALS NOTES:	Incorrect button color was used for the olive colorway	APPROVED?	YES NO
OTHER NOTES:	Distance from pocket to placket is too small adjust to 1"	APPROVED?	YES NO
ACTION:	SAMPLE APPROVED AS IS	REQUEST NEW SAMPLE WITH ABOVE CHANGES	
DATE APPROVAL OR REQUEST COMMUNICATED:	6/27/2022		

TYPE OF SAMPLE:	Second prototype	DATE SAMPLE RECEIVED:	7/5/2022
FIT NOTES:		APPROVED?	YES NO
CONSTRUCTION NOTES:		APPROVED?	YES NO
MATERIALS NOTES:		APPROVED?	YES NO
OTHER NOTES:		APPROVED?	YES NO
ACTION:	SAMPLE APPROVED AS IS	REQUEST NEW SAMPLE WITH ABOVE CHANGES	
DATE APPROVAL OR REQUEST COMMUNICATED:	7/7/2022		

TYPE OF SAMPLE:		DATE SAMPLE RECEIVED:	
FIT NOTES:		APPROVED?	YES NO
CONSTRUCTION NOTES:		APPROVED?	YES NO
MATERIALS NOTES:		APPROVED?	YES NO
OTHER NOTES:		APPROVED?	YES NO
ACTION:	SAMPLE APPROVED AS IS	REQUEST NEW SAMPLE WITH ABOVE CHANGES	
DATE APPROVAL OR REQUEST COMMUNICATED:			