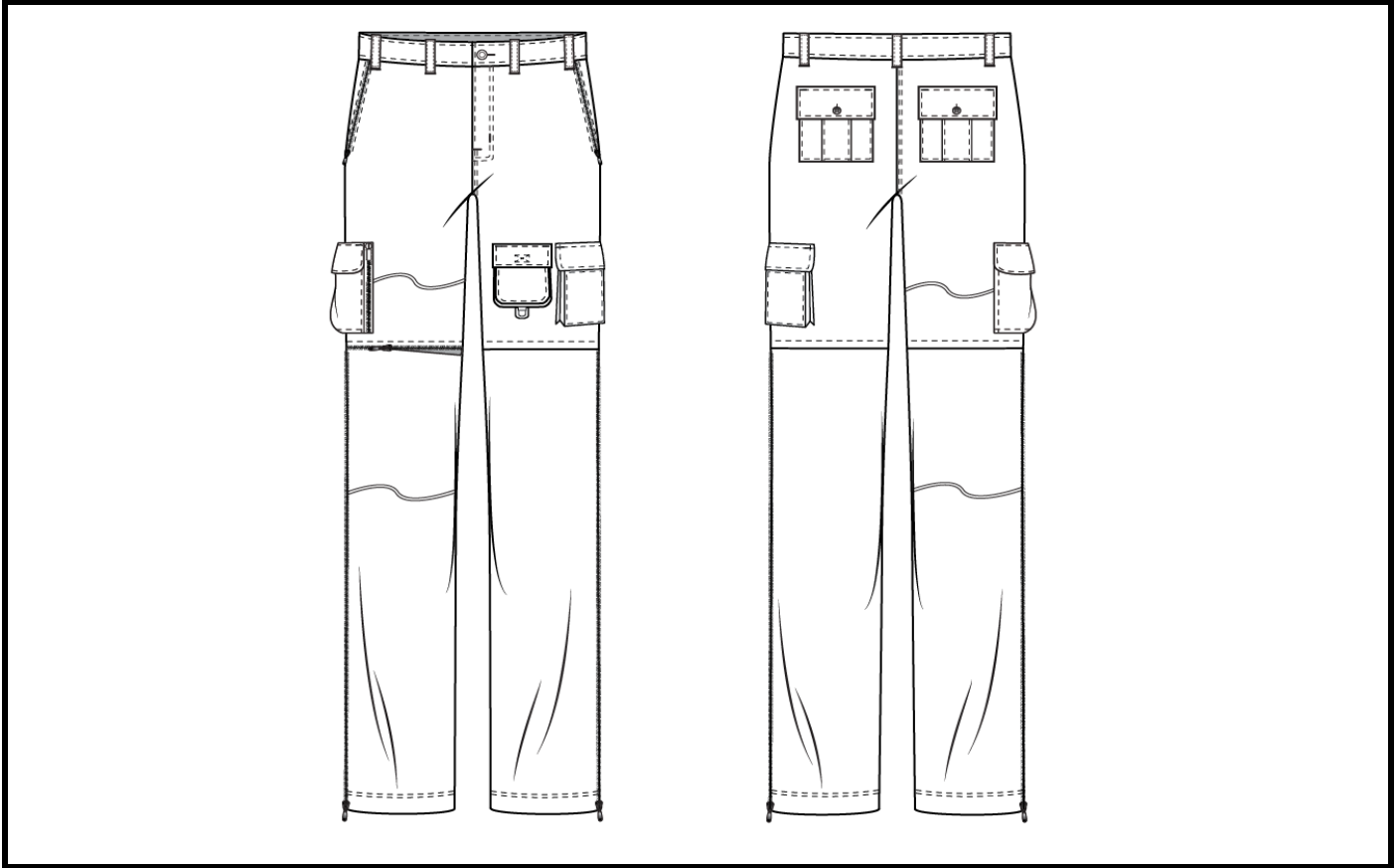


SPECIFICATIONS LEAD SHEET

STYLE NUMBER:	5104	SIZE RANGE:	28-38
PROTO NUMBER:	1	SAMPLE SIZE:	32
MAIN LABEL:		SEASON:	SS 2023
CONTENT:	68% Cotton, 28 % Nylon, 3% Spandex	CATEGORY:	menswear, outerwear
CARE:	Wash in cold, hang dry	DESCRIPTION:	Convertible zipper cargo pants



SELF FABRIC:	68% Cotton, 28 % Nylon, 3% Spandex	SUPPLIER:	MOOD Fabrics
CONTRAST 1:		SUPPLIER:	
CONTRAST 2:		SUPPLIER:	
CONTRAST 3:		SUPPLIER:	
CONTRAST 4:		SUPPLIER:	
LINING 1:		SUPPLIER:	
LINING 2:		SUPPLIER:	
POCKETING:	60% Cotton, 40% polyester	SUPPLIER:	MOOD Fabrics
INTERFACING 1:		SUPPLIER:	
INTERFACING 2:		SUPPLIER:	
INTERFACING 3:		SUPPLIER:	
TRIM 1:	Antique brass tack button	SUPPLIER:	Wawak Sewing
TRIM 2:	4-Hole, Plastic button	SUPPLIER:	Wawak Sewing
TRIM 3:	Reflective piping	SUPPLIER:	Seattle Fabrics
TRIM 4:	Antique brass D-ring	SUPPLIER:	Wawak Sewing
TRIM 5:	Antique brass zipper	SUPPLIER:	Wawak Sewing
TRIM 6:	Nylon coil separating zipper	SUPPLIER:	Wawak Sewing
TRIM 7:	Arctic Descent hangtag	SUPPLIER:	Shopify
TRIM 8:	Wash and care label	SUPPLIER:	Shopify

LABEL PLACEMENT SHEET

STYLE NUMBER: 5104

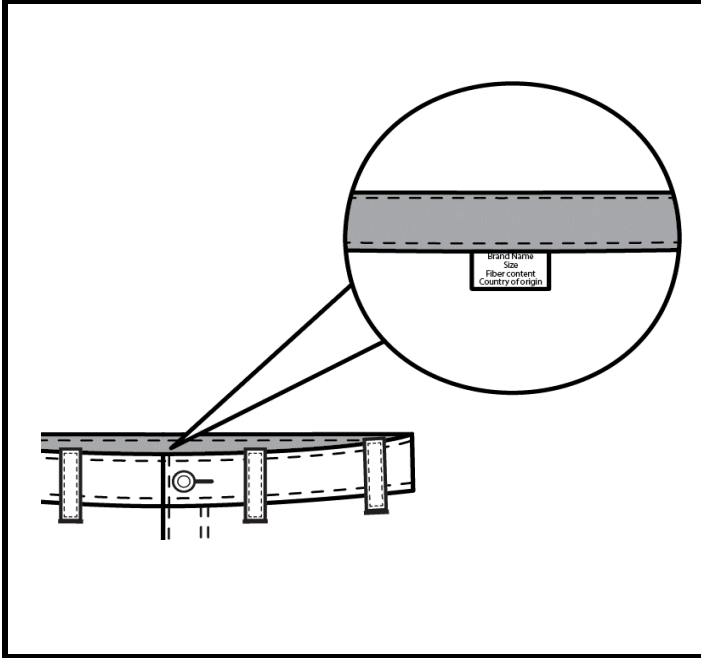
SIZE RANGE: 28-38

PROTO NUMBER: 1

SAMPLE SIZE: 32

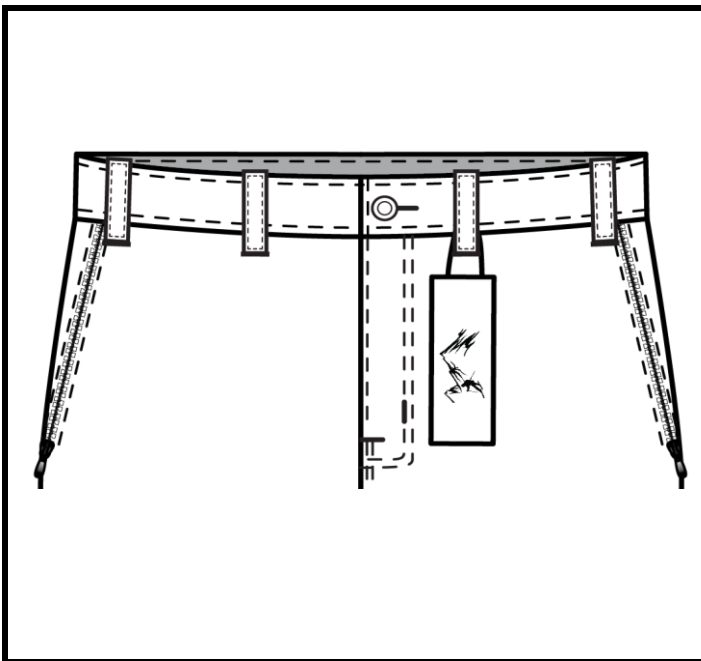
DESCRIPTION: Convertible zipper cargo pants

SEASON: SS 2023



LABEL: Brand name, size, fiber content, country of origin
Attached under waistband on CB

LABEL: Care label
Attached under waistband on CB behind product information tag



LABEL PLACEMENT SKETCH

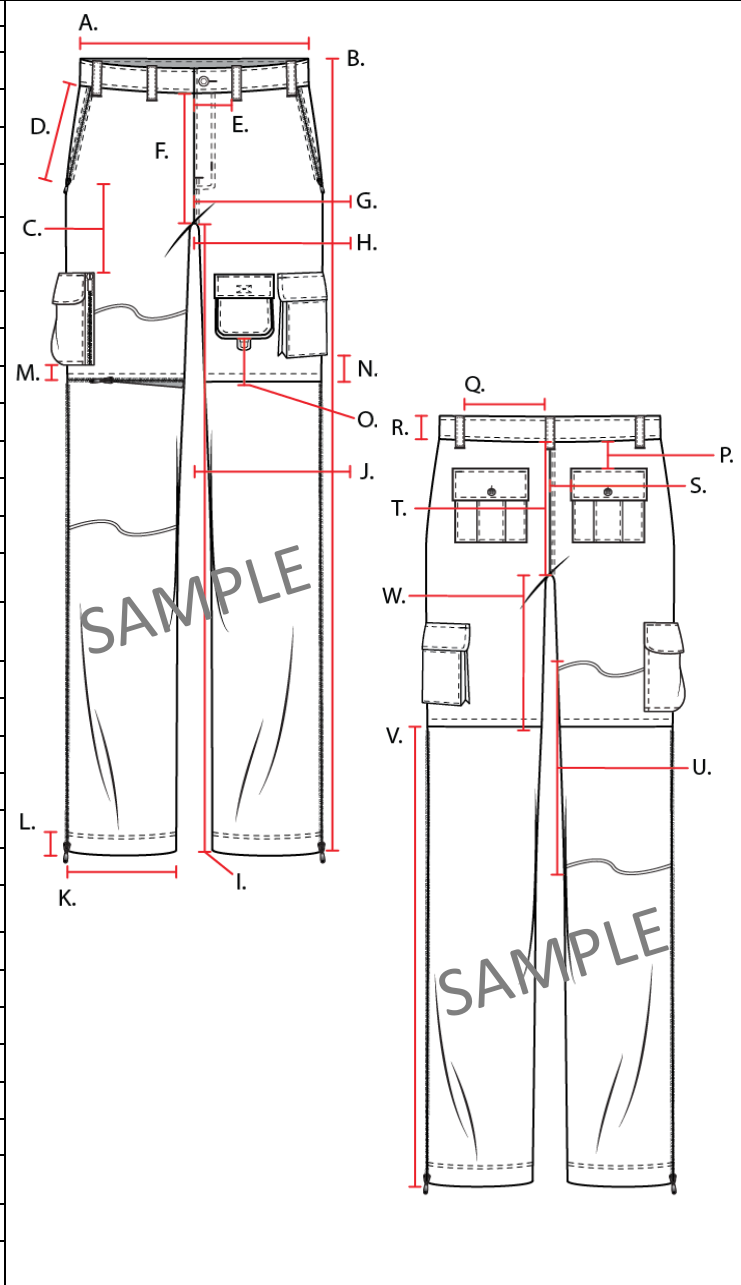
LABEL: Arctic Descent hangtag
Attached to front right belt loop

LABEL:

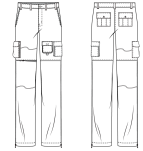
POINTS OF MEASURE

STYLE #:	5104	FIT TYPE:	Standard, Straight fit	DESIGNER	Isaac Silva
FABRIC:	68% Cotton, 28 % Nylon, 3% Spandex	SIZE RANGE:	28-38	SEASON:	SS 2023
SAMPLE SIZE:	32	STATUS:	Prototype-1		

POINT	TOLERANCE	MEASURE	MEASURE	TOLERANCE	MEASURE
A. RELAXED WAIST	1/4"	14"			
EXTENDED WAIST	1/4"	14 1/2"			
B. OUTSEAM LENGTH	1/4"	35 1/2"			
C. DISTANCE FROM BOTTOM OF POCKET OPENING TO START OF RIGHT SIDE CARGO POCKET	1/4"	5 1/4"			
D. POCKET OPENING LENGTH	1/4"	5"			
E. DISTANCE FROM CF TO FIRST BELT LOOP	3/8"	2 3/8"			
F. FRONT RISE HEIGHT	1/4"	7 5/8"			
G. SEAT FROM 8" BELOW BOTTOM OF WAISTBAND	1/4"	10 7/8"			
H. THIGH FROM 1" BELOW CROTCH SEAM	1/4"	11 1/4"			
I. INSEAM	1/2"	28"			
J. KNEE 15" DOWN FROM CROTCH SEAM	1/4"	8"			
K. LEG OPENING AT HEM	3/8"	7 7/8"			
L. HEM WIDTH	1/8"	1 1/2"			
M. DISTANCE FROM RIGHT SIDE CARGO POCKET TO HEM OF CONVERTIBLE SHORTS	1/8"	1"			
N. DISTANCE FROM LEFT SIDE CARGO POCKET TO HEM OF CONVERTIBLE SHORTS	1/8"	2"			
O. BACK RISE HEIGHT	3/8"	3 1/4"			
P. DISTANCE BETWEEN WAISTBAND AND BACK POCKET	1/8"	2 3/4"			
Q. DISTANCE BETWEEN BACK BELT LOOPS	1/4"	6 1/2"			
R. WAISTBAND HEIGHT	1/8"	1 3/4"			
S. DISTANCE FROM CB SEAM TO BACK POCKET	1/8"	2"			
T. BACK RISE HEIGHT	1/4"	8 5/8"			
U. DISTANCE BETWEEN TOP OF PIPING TO LOWEST PART OF PIPING	3/8"	10 1/4"			
V. LENGTH OF DETACHABLE LEG PANEL	1/2"	27 5/8"			
W. INSEAM OF SHORTS SECTION	1/4"	8"			



BILL OF MATERIALS



STYLE #:	5104	FIT TYPE:	Standard, Straight	DESIGNER	Isaac Silva
FABRIC:	68% Cotton, 28 % Nylon, 3% Spandex	SIZE RANGE:	28-38	SEASON:	SS 2023
SAMPLE SIZE:	32	STATUS:	Prototype-1		

FABRIC

ITEM	PLACEMENT	SUPPLIER	CONTENT	WIDTH / WEIGHT / SIZE	FINISH	YIELD	COST
SELF FABRIC	Body	MOOD Fabrics	68% Cotton, 28% Nylon, 3% Spandex	48"	pre-shrunk	4 yds.	\$56.79
BIAS BINDING	-	-	-	-	-	-	-
POCKETING	Hand Pockets	MOOD Fabrics	60% Cotton, 40% Polyester	57"	pre-shrunk	1 yd.	\$4.99
THREAD-DTM BODY	Join & overlock	A & E	100% Spun polyester	tex 30	-	-	-
THREAD-CONTRAST	Topstitch	A & E	100% Spun polyester	tex 90	-	-	-

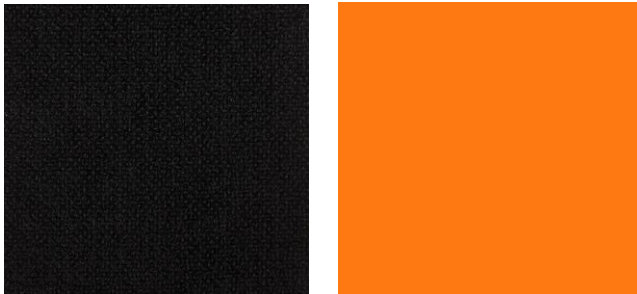
HARDWARE

ITEM	PLACEMENT	SUPPLIER	DESCRIPTION	WIDTH	FINISH	YIELD	COST
CENTER FRONT BUTTON:	Waistband	Wawak Sewing	Brass star jean tack button	26L	Antique brass	1	\$0.15
EXTRA BUTTON:	Interior sideseam right side	Wawak Sewing	Black button	26L	-	2	\$0.14
D-RING:	Under left cargo pocket	Wawak Sewing	Antique brass D-Ring	1/2"	Antique brass	1	\$0.49
PIPING:	Right leg above and below knee zipper	Wawak Sewing	Reflective piping	1/8"	Reflective	1 yd.	\$2.45
VELCRO:	On left front cargo pocket flap	Wawak Sewing	Velcro	30"	-	1 yd.	\$0.75
SEPARATING ZIPPER:	Sideseams and above knee	YKK Tokyo	Nylon coil separating zipper	-	-	4	\$2.78
ZIPPER:	CF fly	YKK Tokyo	Antique brass jean zipper	-	Antique brass	1	\$1.26

LABELING/ PACKAGING

ITEM	PLACEMENT	SUPPLIER	DESCRIPTION	WIDTH	FINISH	YIELD	COST
HANGTAG	Side belt loop	Shopify	Arctic Descent Hangtag	2" X 4"	matte	1	\$2
INTERIOR LABEL	Under waistband on CB behind product information tag	Shopify	Wash and care label	1" X 3"	none	1	\$1
	Under waistband on CB	Shopify	Brand, Size, Fiber content, Country of origin	1.5" X 1.5"	none	1	\$0.50

FABRIC SWATCHES:



CONSTRUCTION DETAILS SHEET

STYLE NUMBER: 5104

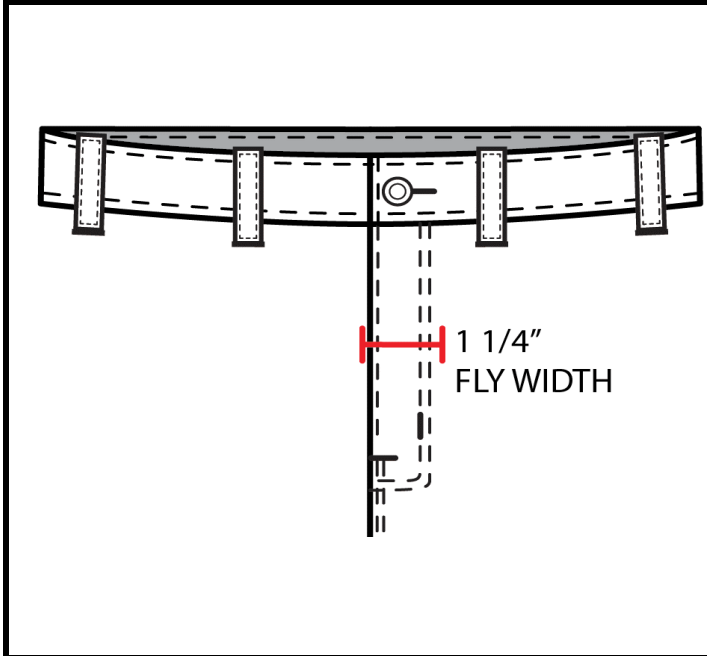
SIZE RANGE: 28-38

PROTO NUMBER: 1

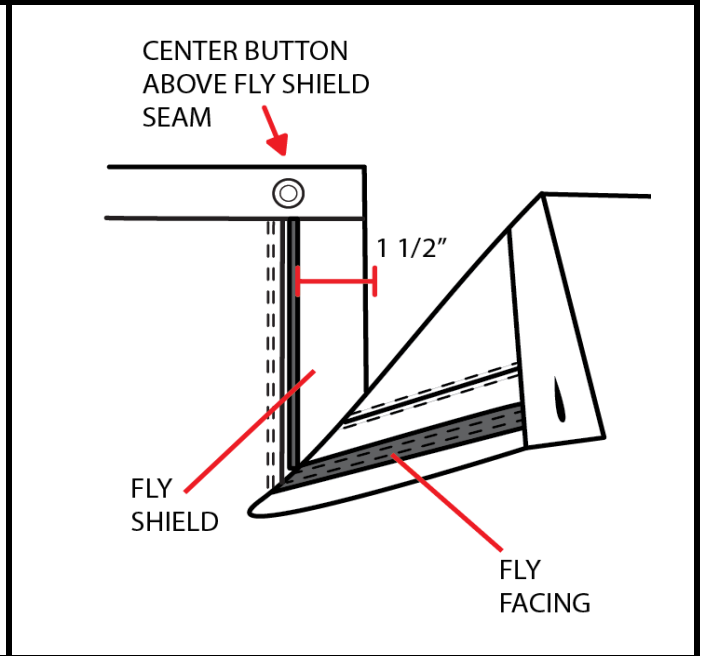
SAMPLE SIZE: 32

DESCRIPTION: Convertible zipper cargo pants

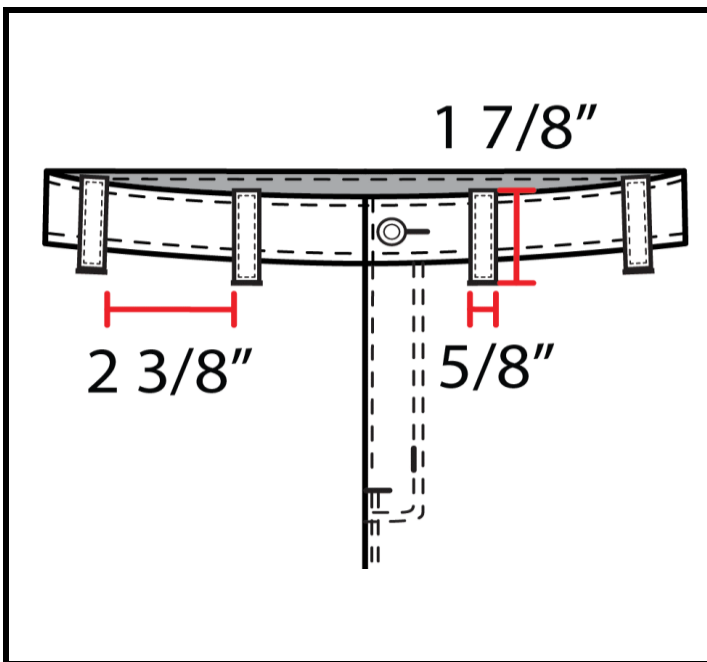
SEASON: SS 2023



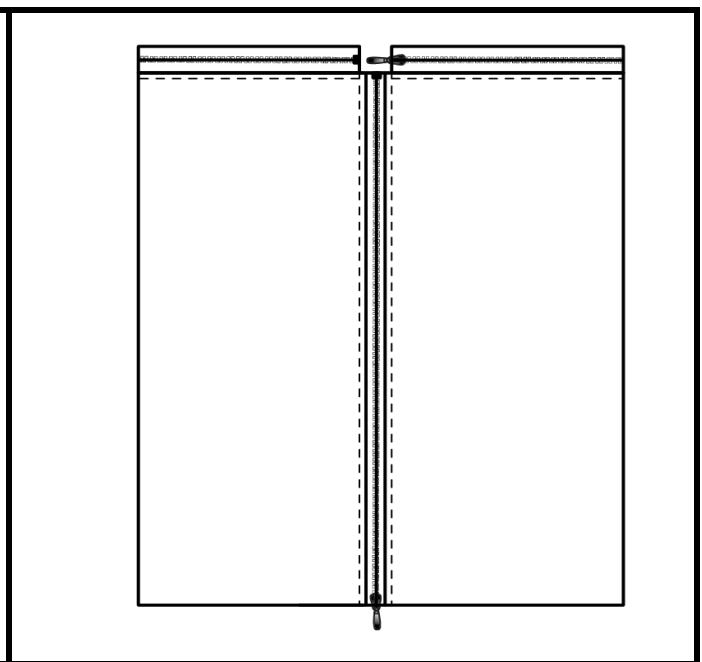
CONSTRUCTION DETAIL NUMBER & DESCRIPTION:
Front fly width



CONSTRUCTION DETAIL NUMBER & DESCRIPTION:
Width of fly shield



CONSTRUCTION DETAIL NUMBER & DESCRIPTION:
Distance between front belt loops and dimensions of belt loops



CONSTRUCTION DETAIL NUMBER & DESCRIPTION:
See P.O.M for dimensions of side seam and knee zipper panels

CONSTRUCTION DETAILS SHEET

STYLE NUMBER: 5104

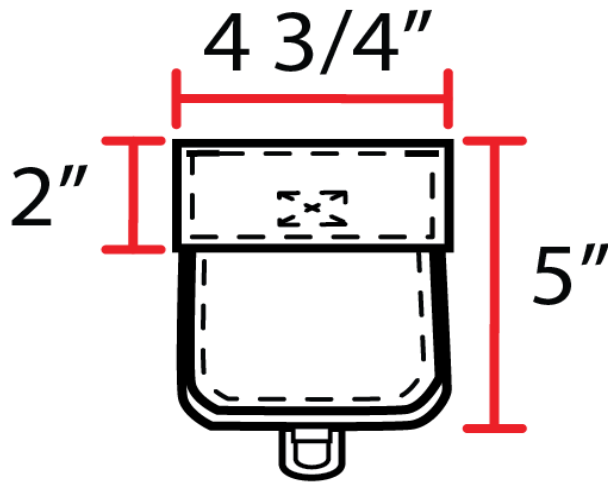
SIZE RANGE: 28-38

PROTO NUMBER: 1

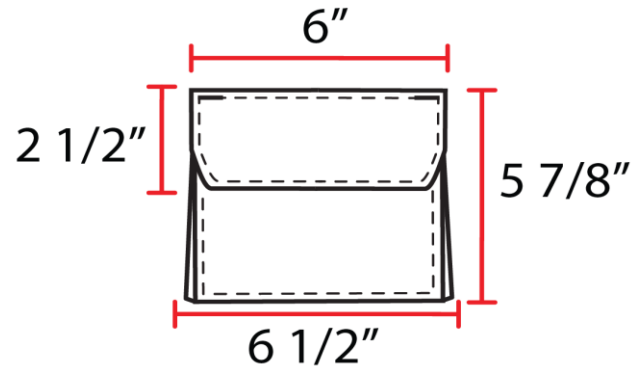
SAMPLE SIZE: 32

DESCRIPTION: Convertible zipper cargo pants

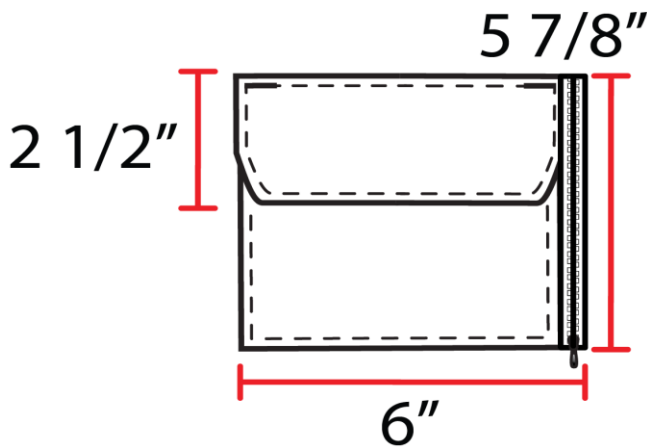
SEASON: SS 2023



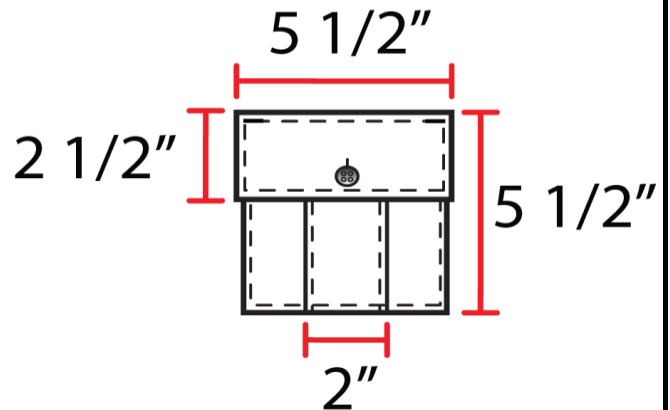
CONSTRUCTION DETAIL NUMBER & DESCRIPTION:
Cargo pocket with D-Ring



CONSTRUCTION DETAIL NUMBER & DESCRIPTION:
Cargo pocket centered on side seam



CONSTRUCTION DETAIL NUMBER & DESCRIPTION:
Cargo pocket with side zipper centered on side seam



CONSTRUCTION DETAIL NUMBER & DESCRIPTION:
Back cargo pocket

Construction Page

STYLE #: 5104		FIT TYPE: Standard, Straight		DESIGNER: Isaac Silva	
FABRIC: 68% Cotton, 28% Nylon, 3% Spandex		SIZE RANGE: 28-38		SEASON: SS 2023	
Cutting Information: 1 way, lengthwise					
Stitches per Inch (SPI) 11 +/- 1 for joining, 8 +/- for topstitching					
AREA	DESCRIPTION	JOIN STITCH	SEAM FINISH	TOPSTITCH	INTER-LINING
BACK RISE, INSEAMS	join & topstitch	flatfell	flatfell	flatfell	-
FRONT RISE, BELOW FLY	join & topstitch	single-needle lock	flatfell	two needle lock (to match flatfell)	-
SIDSEAMS	join	5-thread safety	5-thread safety	1/4"	-
WAISTBAND	folder-attached	two-needle chain	-	1/4"	fusible
WAISTBAND	ends	single-needle lock	-	3/8"	-
BELT LOOPS	form & finish	1/4" two-needle bottom coverstitch			-
BARTACKS	see detail sketches	-	-	1/2"	-
HAND POCKET, SIDE FRONT	palm side, shell to pkt bag	1/4" two-needle top-and-bottom coverstitch		1/4"	-
HAND POCKET BAG	French seam across bottom	single-needle lock	-	1/4"	-
BOTTOM OPENING	hem	single-needle lock	clean finish	1/2"	-
CLOSURES					
BUTTON, WAISTBAND	bartack	-	-	-	-
BUTTONHOLE	buttonhole, keyhole	-	-	-	-
FLY, J-STITCHING	-	single-needle lock	-	2 rows, 1/4"	-
FLY SHIELD EDGE	-	-	3-thread overlock	-	-
FLY FACING EDGE	CF edge, topstitch	single-needle lock	-	1/16"	fusible

COLORWAYS SHEET

STYLE NUMBER: 5104	SIZE RANGE: 28-38
PROTO NUMBER: 1	SAMPLE SIZE: 32
DESCRIPTION: Convertible zipper cargo pants	SEASON: SS 2023

MATERIAL	DESCRIPTION	COLORWAY #1	COLORWAY #2	COLORWAY #3	COLORWAY #4
SELF FABRIC:	68% Cotton, 28 % Nylon, 3% Spandex	Black 419	White Alyssum 11- 1001 TCX		
THREAD 1:	100% Spun polyester	Black	White		
THREAD 2:	100% Spun polyester	White	Orange		
THREAD 3:					
CONTRAST 1:	68% Cotton, 28 % Nylon, 3% Spandex	White Alyssum 11- 1001 TCX	Oriole 17-1350 TCX		
CONTRAST 2:					
CONTRAST 3:					
CONTRAST 4:					
LINING 1:					
LINING 2:					
POCKETING:	60% Cotton, 40% Polyester	Black 419	White Alyssum 11- 1001 TCX		
INTERFACING 1:					
INTERFACING 2:					
INTERFACING 3:					
TRIM 1:	Antique brass tack button	Brass	Brass		
TRIM 2:	4-Hole, Plastic button	Black	White		
TRIM 3:	Reflective piping	White	Black		
TRIM 4:	Antique brass D-ring	Brass	Brass		
TRIM 5:	Antique brass zipper	Brass	Brass		
TRIM 6:	Nylon coil separating zipper	Black	White		
EMBROIDERY:					
BEADING:					
APPLIQUE:					
STITCHING:					

SPECIFICATIONS MEASUREMENT SHEET

STYLE NUMBER and FABRICATION: 5104 68% Cotton, 28 % Nylon, 3% Spandex

DESCRIPTION: Convertible zipper cargo pants

SAMPLE SIZE: 32

(MEASUREMENTS ARE IN INCHES)

		TOL +/-	1ST SAMPLE		2ND SAMPLE		3RD SAMPLE		4TH SAMPLE	
			Actual	Request	Actual	Request	Actual	Request	Actual	Request
1	RELAXED WAIST	1/4"	14"		14"		14"			
2	EXTENDED WAIST	1/4"	14 1/2"		14 1/2"		14 1/2"			
3	OUTSEAM LENGTH	1/4"	35 1/2"		35 1/2"		35 1/2"			
4	DISTANCE FROM BOTTOM OF POCKET OPENING TO START OF RIGHT SIDE CARGO POCKET	1/4"	5 1/4"		5 1/4"		5 1/4"			
5	POCKET OPENING LENGTH	1/4"	5"		5"		5"			
6	DISTANCE FROM CF TO FIRST BELT LOOP	3/8"	2 3/8"		2 3/8"		2 3/8"			
7	FRONT RISE HEIGHT	1/4"	7 5/8"		8 1/2"	7 5/8"	7 5/8"			
8	SEAT FROM 8" BELOW BOTTOM OF WAISTBAND	1/4"	10 7/8"		10 7/8"		10 7/8"			
9	THIGH FROM 1" BELOW CROTCH SEAM	1/4"	11 1/4"		11 1/4"		11 1/4"			
10	INSEAM	1/2"	27"	28"	28"		28"			
11	KNEE 15" DOWN FROM CROTCH SEAM	1/4"	7 1/2"	8"	8"		8"			
12	LEG OPENING AT HEM	3/8"	7 7/8"		7 7/8"		7 7/8"			
13	HEM WIDTH	1/8"	1 1/2"		1 1/2"		1 1/2"			
14	DISTANCE FROM RIGHT SIDE CARGO POCKET TO HEM OF CONVERTIBLE SHORTS	1/8"	1"		1"		1"			
15	DISTANCE FROM LEFT SIDE CARGO POCKET TO HEM OF CONVERTIBLE SHORTS	1/8"	2"		2"		2"			
16	BACK RISE HEIGHT	3/8"	3 1/4"		3 1/4"		3 1/4"			
17	DISTANCE BETWEEN WAISTBAND AND BACK POCKET	1/8"	2 3/4"		2 3/4"		2 3/4"			
18	DISTANCE BETWEEN BACK BELT LOOPS	1/4"	5 1/2"	6 1/2"	6 1/2"		6 1/2"			
19	WAISTBAND HEIGHT	1/8"	1 3/4"		1 3/4"		1 3/4"			
20	DISTANCE FROM CB SEAM TO BACK POCKET	1/8"	2"		2"		2"			
21	BACK RISE HEIGHT	1/4"	8 5/8"		8 1/4"	8 5/8"	8 5/8"			
22	DISTANCE BETWEEN TOP OF PIPING TO LOWEST PART OF PIPING	3/8"	10 1/4"		10 1/4"		10 1/4"			
23	LENGTH OF DETACHABLE LEG PANEL	1/2"	27 5/8"		27 5/8"		27 5/8"			
24	INSEAM OF SHORTS SECTION	1/4"	8"		8"		8"			

SAMPLE TRACKING SHEET

STYLE NUMBER:	5104	SAMPLE SIZE	32
DESCRIPTION:	Convertible zipper cargo pants	SEASON:	SS 2023

TYPE OF SAMPLE:	First prototype	DATE SAMPLE RECEIVED:	6/28/2022
FIT NOTES:	_____	APPROVED?	YES NO

CONSTRUCTION NOTES:	Increase inseam by 1" Increase knee measurement by 1/2"	APPROVED?	YES NO
	Increase distance between back belt loops by 1"		
MATERIALS NOTES:	_____	APPROVED?	YES NO

OTHER NOTES:	_____	APPROVED?	YES NO

ACTION:	SAMPLE APPROVED AS IS	REQUEST NEW SAMPLE WITH ABOVE CHANGES	
DATE APPROVAL OR REQUEST COMMUNICATED:	6/28/2022		

TYPE OF SAMPLE:	Second prototype	DATE SAMPLE RECEIVED:	7/7/2022
FIT NOTES:	Fits too loose around crotch	APPROVED?	YES NO

CONSTRUCTION NOTES:	Adjust front rise height to 7 5/8"	APPROVED?	YES NO
	Adjust back rise height to 8 5/8"		
MATERIALS NOTES:	Zipper tape on left sideseam is exposed towards hem	APPROVED?	YES NO

OTHER NOTES:	_____	APPROVED?	YES NO

ACTION:	SAMPLE APPROVED AS IS	REQUEST NEW SAMPLE WITH ABOVE CHANGES	
DATE APPROVAL OR REQUEST COMMUNICATED:	7/8/2022		

TYPE OF SAMPLE:	Third prototype	DATE SAMPLE RECEIVED:	7/15/2022
FIT NOTES:	_____	APPROVED?	YES NO

CONSTRUCTION NOTES:	_____	APPROVED?	YES NO

MATERIALS NOTES:	_____	APPROVED?	YES NO

OTHER NOTES:	_____	APPROVED?	YES NO

ACTION:	SAMPLE APPROVED AS IS	REQUEST NEW SAMPLE WITH ABOVE CHANGES	
DATE APPROVAL OR REQUEST COMMUNICATED:	7/15/2022		