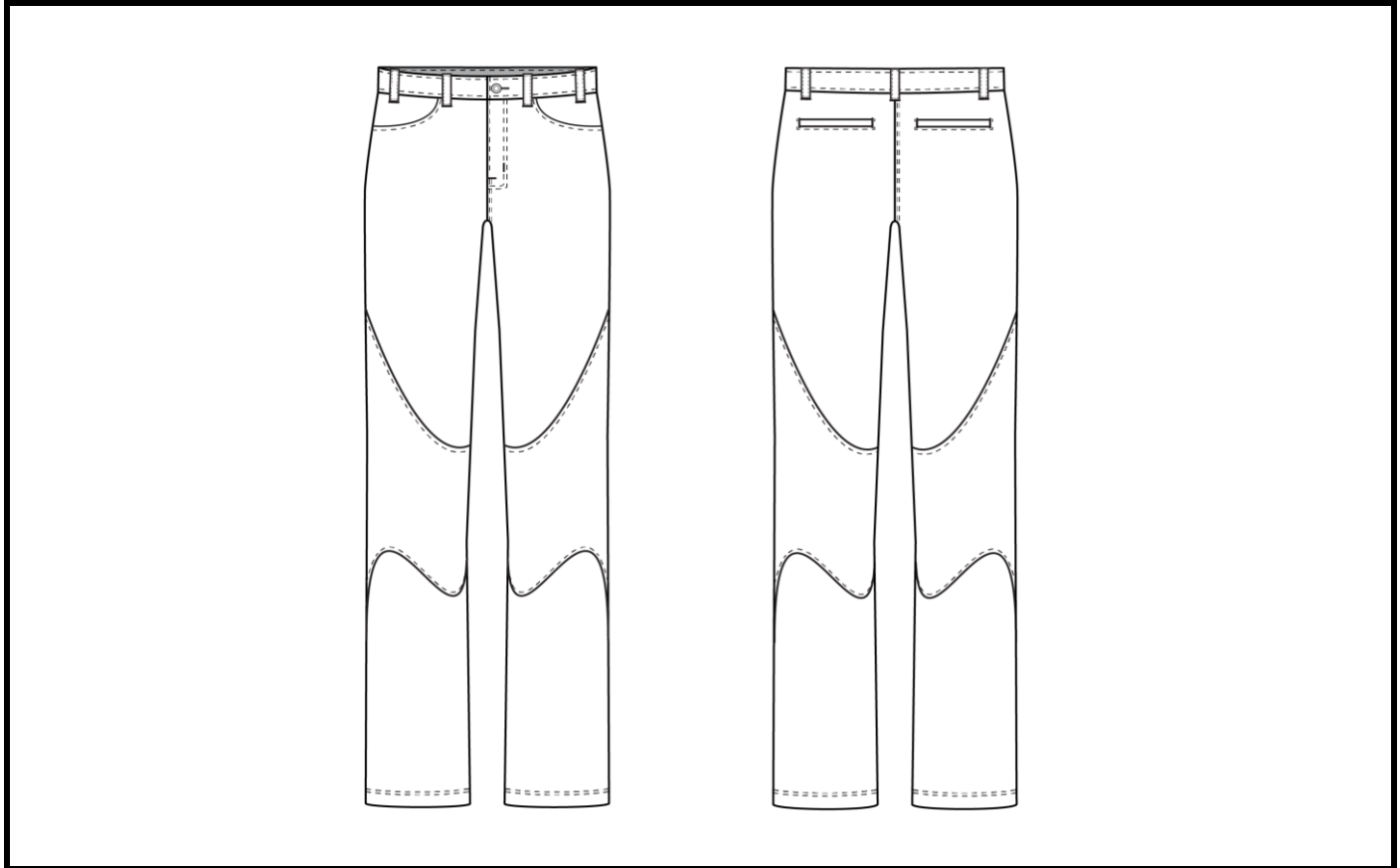


SPECIFICATIONS LEAD SHEET

STYLE NUMBER:	5105	SIZE RANGE:	28-38
PROTO NUMBER:	1	SAMPLE SIZE:	32
MAIN LABEL:		SEASON:	SS 2023
CONTENT:	53% Hemp, 23% Organic Cotton, 21% Tencel Lyocell, 3% Spandex	CATEGORY:	menswear, outerwear
CARE:	Wash in cold, hang dry	DESCRIPTION:	Curved panel pants



SELF FABRIC:	53% Hemp, 23% Organic Cotton, 21% Tencel Lyocell, 3% Spandex	SUPPLIER:	MOOD Fabrics
CONTRAST 1:		SUPPLIER:	
CONTRAST 2:		SUPPLIER:	
CONTRAST 3:		SUPPLIER:	
CONTRAST 4:		SUPPLIER:	
LINING 1:		SUPPLIER:	
LINING 2:		SUPPLIER:	
POCKETING:	60% Cotton, 40% polyester	SUPPLIER:	MOOD Fabrics
INTERFACING 1:		SUPPLIER:	
INTERFACING 2:		SUPPLIER:	
INTERFACING 3:		SUPPLIER:	
TRIM 1:	4-Hole, Plastic button	SUPPLIER:	Wawak Sewing
TRIM 2:	Antique brass zipper	SUPPLIER:	YKK Tokyo
TRIM 3:	Arctic Descent hangtag	SUPPLIER:	Shopify
TRIM 4:	Wash and care label	SUPPLIER:	Shopify
TRIM 5:		SUPPLIER:	
TRIM 6:		SUPPLIER:	

LABEL PLACEMENT SHEET

STYLE NUMBER: 5105

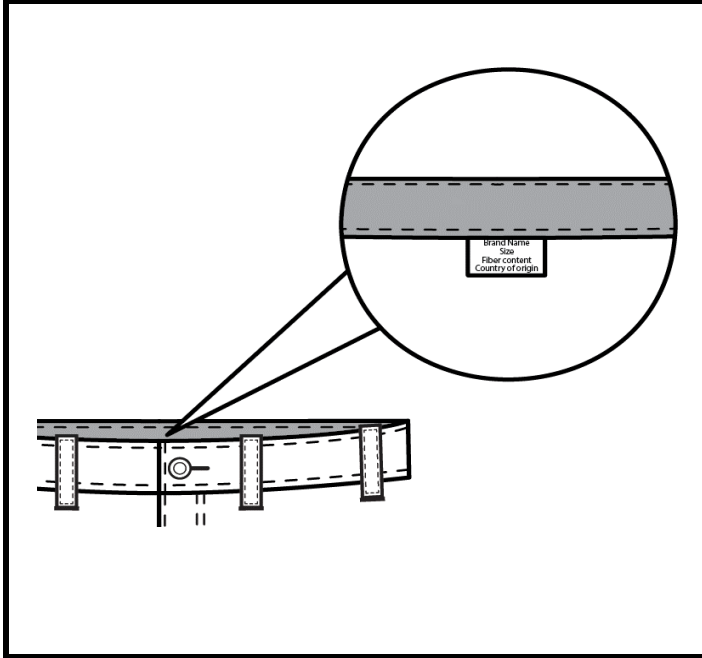
SIZE RANGE: 28-38

PROTO NUMBER: 1

SAMPLE SIZE: 32

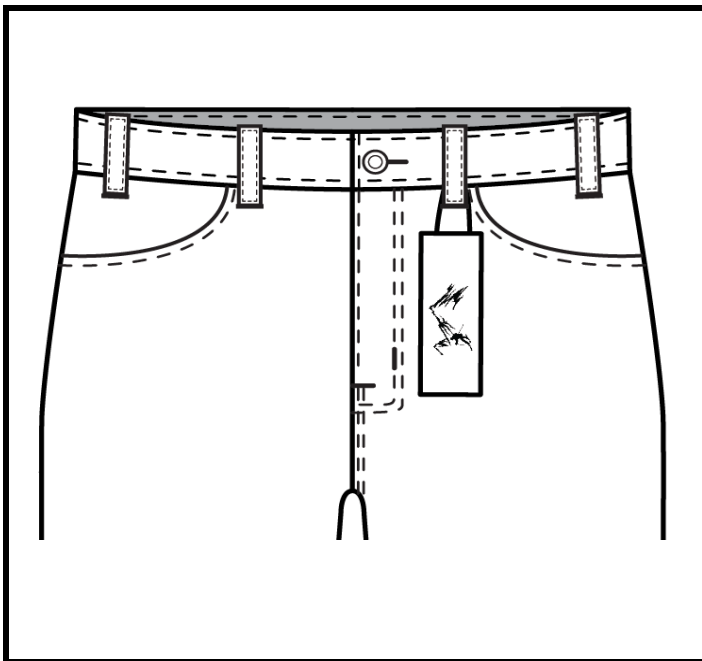
DESCRIPTION: Curved panel pants

SEASON: SS 2023



LABEL: Brand name, size, fiber content, country of origin
Attached under waistband on CB

LABEL: Care label
Attached under waistband on CB behind product information tag



LABEL PLACEMENT SKETCH

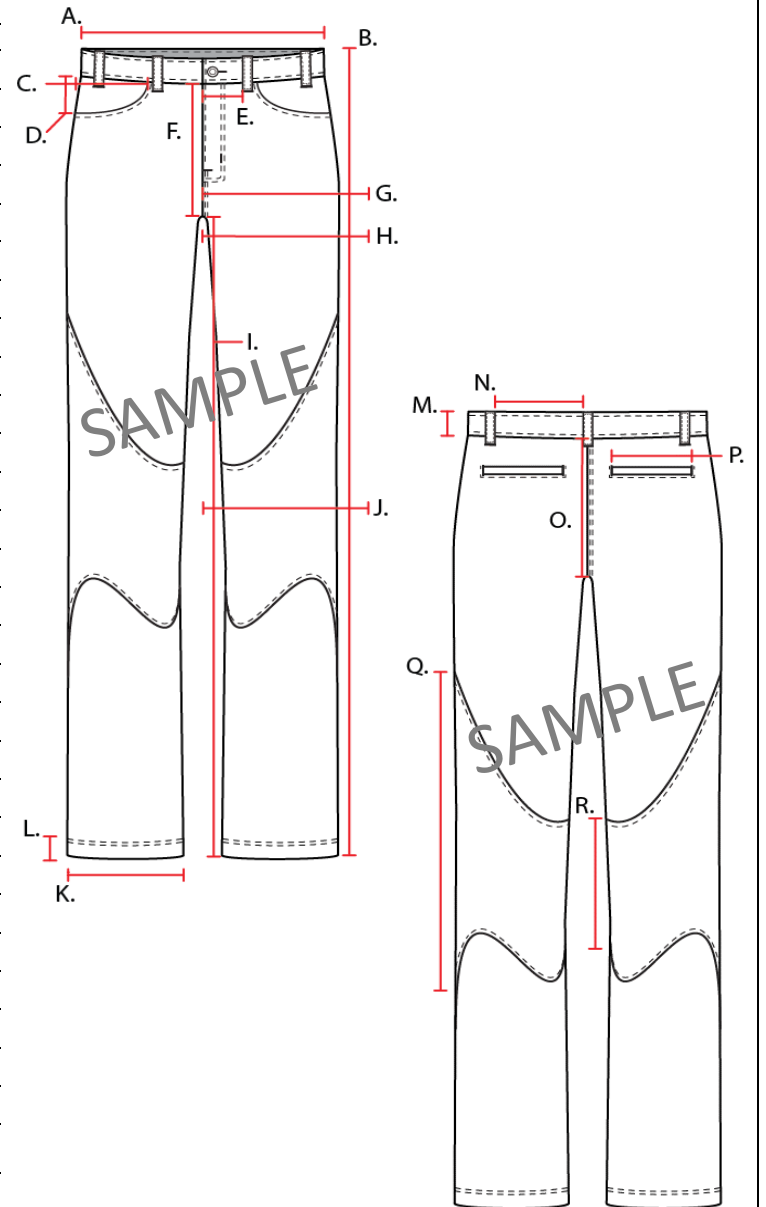
LABEL: Arctic Descent hangtag
Attached to front right belt loop

LABEL:

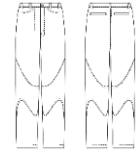
POINTS OF MEASURE

STYLE #:	5105	FIT TYPE:	Standard, Straight fit	DESIGNER	Isaac Silva
FABRIC:	53% Hemp, 23% Organic Cotton, 21% Tencel Lyocell, 3% Spandex	SIZE RANGE:	28-38	SEASON:	SS 2023
SAMPLE SIZE:	32	STATUS:	Prototype-1		

POINT OF MEASURE	TOL	14"	14 1/2"	35"	5 1/4"	3 3/4"	2 3/8"	7 5/8"	10 7/8"	11 1/4"	27"	7"	7 1/2"	1 1/2"	1 1/2"	6 1/2"	8 5/8"	5 1/2"	12 1/2"	8"	
A. RELAXED WAIST	1/4"	14"																			
EXTENDED WAIST	1/4"		14 1/2"																		
B. OUTSEAM LENGTH	1/4"			35"																	
C. DISTANCE FROM SIDESEAM TO POCKET OPENING	1/4"				5 1/4"																
D. POCKET OPENING HEIGHT	1/4"					3 3/4"															
E. DISTANCE FROM CF TO FIRST BELT LOOP	3/8"						2 3/8"														
F. FRONT RISE HEIGHT	1/4"							7 5/8"													
G. SEAT FROM 8" BELOW BOTTOM OF WAISTBAND	1/4"								10 7/8"												
H. THIGH FROM 1" BELOW CROTCH SEAM	1/4"									11 1/4"											
I. INSEAM	1/2"										27"										
J. KNEE 15" DOWN FROM CROTCH SEAM	1/4"											7"									
K. LEG OPENING AT HEM	3/8"												7 1/2"								
L. HEM WIDTH	1/8"													1 1/2"							
M. WAISTBAND HEIGHT	1/8"														1 1/2"						
N. DISTANCE BETWEEN BACK BELT LOOPS	1/8"															6 1/2"					
O. BACK RISE HEIGHT	3/8"																8 5/8"				
P. WIDTH OF BACK WELT POCKET	1/4"																	5 1/2"			
Q. HEIGHT OF OUTSIDE EDGE OF PANEL	1/4"																		12 1/2"		
R. HEIGHT OF INSIDE EDGE OF PANEL	1/4"																			8"	



BILL OF MATERIALS



STYLE #:	5105	FIT TYPE:	Standard, Straight fit	DESIGNER	Isaac Silva
FABRIC:	Hemp, Cotton, Tencel Lyocell, Spandex	SIZE RANGE:	28-38	SEASON:	SS 2023
SAMPLE SIZE:	32	STATUS:	Prototype-1		

FABRIC

ITEM	PLACEMENT	SUPPLIER	CONTENT	WIDTH / WEIGHT / SIZE	FINISH	YIELD	COST
SELF FABRIC	Body	MOOD Fabrics	53% Hemp, 23% Organic Cotton, 21% Tencel Lyocell, 3% Spandex	57"	garment laundered, 60 min.	4 yds.	\$49.93
BIAS BINDING	-	-	-	-	-	-	-
POCKETING	Hand Pockets	MOOD Fabrics	60% Cotton, 40% Polyester	57"	pre-shrunk	1 yd.	\$4.99
THREAD-DTM BODY	Join & overlock	A & E	100% Spun polyester	tex 30	-	1 spool	\$0.99
THREAD-CONTRAST	Topstitch	A & E	100% Spun polyester	tex 90	-	1 spool	\$1.99

HARDWARE

ITEM	PLACEMENT	SUPPLIER	DESCRIPTION	WIDTH	FINISH	YIELD	COST
CENTER FRONT BUTTON:	Waistband	Wawak Sewing	4-Hole, Plastic button	26L	Matte	1	\$0.07
EXTRA BUTTON:	Interior sideseam right side	Wawak Sewing	4-Hole, Plastic button	26L	Matte	2	\$0.14
ZIPPER:	CF fly	YKK Tokyo	6 1/2" Antique brass zipper	-	Antique brass	1	\$1.26

LABELING/ PACKAGING

ITEM	PLACEMENT	SUPPLIER	DESCRIPTION	WIDTH	FINISH	YIELD	COST
HANGTAG	Front right belt loop	Shopify	Arctic Descent Hangtag	2" X 4"	matte	1	\$2
INTERIOR LABEL	Under waistband on CB behind product information tag	Shopify	Wash and care label	1" X 3"	none	1	\$1
	Under waistband on CB	Shopify	Brand, Size, Fiber content, Country of origin	1.5" X 1.5"	none	1	\$0.50

FABRIC SWATCHES:



CONSTRUCTION DETAILS SHEET

STYLE NUMBER: 5105

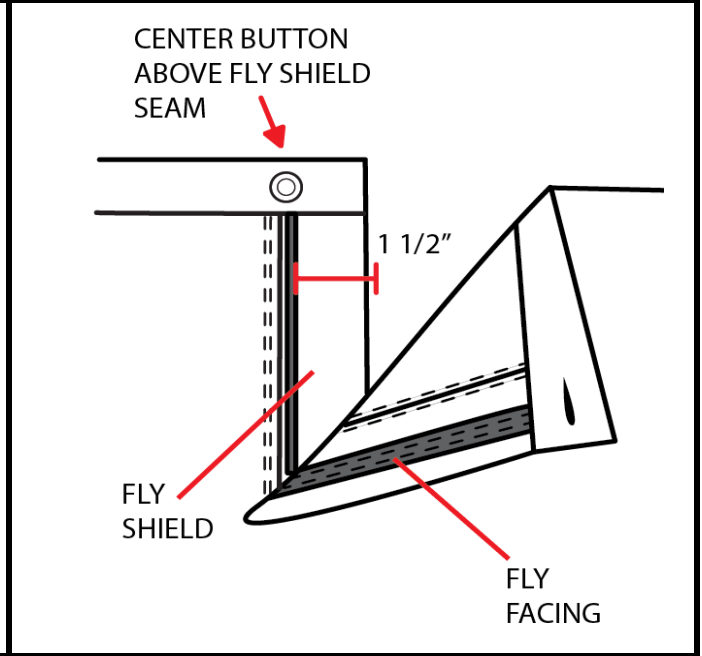
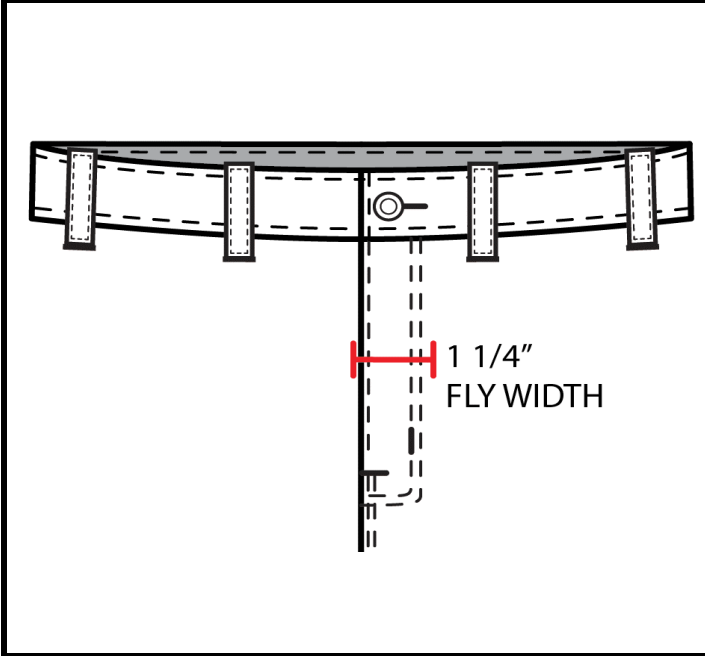
SIZE RANGE: 28-38

PROTO NUMBER: 1

SAMPLE SIZE: 32

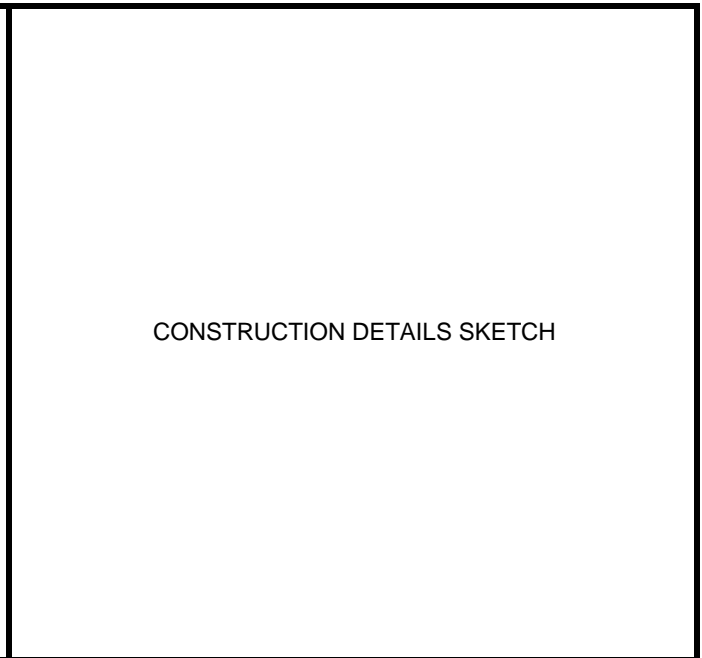
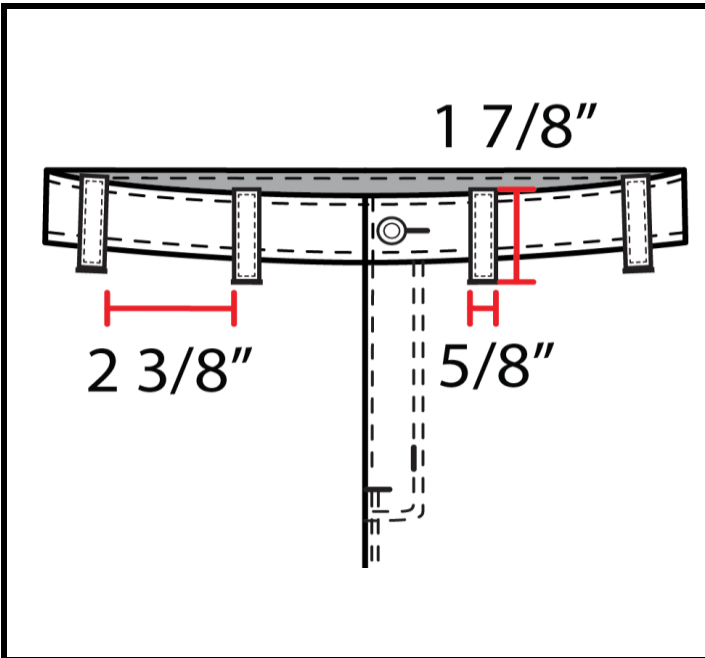
DESCRIPTION: Curved panel pants

SEASON: SS 2023



CONSTRUCTION DETAIL NUMBER & DESCRIPTION:
Front fly width

CONSTRUCTION DETAIL NUMBER & DESCRIPTION:
Width of fly shield



CONSTRUCTION DETAIL NUMBER & DESCRIPTION:
Distance between front belt loops and dimensions of belt loops

CONSTRUCTION DETAIL NUMBER & DESCRIPTION:

Construction Page

STYLE #: 5105		FIT TYPE: Standard, Straight		DESIGNER: Isaac Silva	
FABRIC: Hemp, Cotton, Tencel Lyocell, Spandex		SIZE RANGE: 28-38		SEASON: SS 2023	
Cutting Information: 1 way, lengthwise					
Stitches per Inch (SPI) 11 +/- 1 for joining, 8 +/- for topstitching					
AREA	DESCRIPTION	JOIN STITCH	SEAM FINISH	TOPSTITCH	INTER-LINING
BACK RISE, INSEAMS	join & topstitch	flatfell	flatfell	flatfell	-
FRONT RISE, BELOW FLY	join & topstitch	single-needle lock	flatfell	two needle lock (to match flatfell)	-
SIDSEAMS	join	5-thread safety	5-thread safety	1/4"	-
WAISTBAND	folder-attached	two-needle chain	-	1/4"	-
WAISTBAND	ends	single-needle lock	-	3/8"	-
BELT LOOPS	form & finish	1/4" two-needle bottom coverstitch			-
BARTACKS	see detail sketches	-	-	1/2"	-
HAND POCKET, SIDE FRONT	palm side, shell to pkt bag	1/4" two-needle top-and-bottom coverstitch		1/4"	-
HAND POCKET BAG	French seam across bottom	single-needle lock	-	1/4"	-
BOTTOM OPENING	hem	single-needle lock	clean finish	1/2"	-
CLOSURES					
BUTTON, WAISTBAND	bartack	-	-	-	-
BUTTONHOLE	buttonhole, keyhole	-	-	-	-
FLY, J-STITCHING	-	single-needle lock	-	2 rows, 1/4"	-
FLY SHIELD EDGE	-	-	3-thread overlock	-	-
FLY FACING EDGE	CF edge, topstitch	single-needle lock	-	1/16"	fusible

COLORWAYS SHEET

STYLE NUMBER: 5105
 PROTO NUMBER: 1
 DESCRIPTION: Curved panel pants

SIZE RANGE: 28-38
 SAMPLE SIZE: 32
 SEASON: SS 2023

MATERIAL	DESCRIPTION	COLORWAY #1	COLORWAY #2	COLORWAY #3	COLORWAY #4
SELF FABRIC:	53% Hemp, 23% Organic Cotton, 21% Tencel Lyocell, 3% Spandex	Olive 18-0328 TCX	Black 419		
THREAD 1:	100% Spun polyester	Olive	Black		
THREAD 2:	100% Spun polyester	Black	White		
THREAD 3:					
CONTRAST 1:					
CONTRAST 2:					
CONTRAST 3:					
CONTRAST 4:					
LINING 1:					
LINING 2:					
POCKETING:	60% cotton, 40% polyester	Olive 18-0328 TCX	Black 419		
INTERFACING 1:					
INTERFACING 2:					
INTERFACING 3:					
TRIM 1:	4-Hole, Plastic button	Matte black	Matte black		
TRIM 2:	Antique brass zipper	Antique brass	Antique brass		
TRIM 3:					
TRIM 4:					
TRIM 5:					
TRIM 6:					
EMBROIDERY:					
BEADING:					
APPLIQUE:					
STITCHING:					

SAMPLE TRACKING SHEET

STYLE NUMBER:	5105	SAMPLE SIZE:	32
DESCRIPTION:	Curved panel pants	SEASON:	SS 2023

TYPE OF SAMPLE:	First prototype	DATE SAMPLE RECEIVED:	6/28/2022
FIT NOTES:	Knee length is too long adjust to 7"	APPROVED?	YES NO
	Front rise height is too short increase to 7 5/8"		
CONSTRUCTION NOTES:	Distance from sideseam to pocket opening is too large adjust to 5 1/4"	APPROVED?	YES NO
	Adjust waistband height to 1 1/2"		
MATERIALS NOTES:	Button used is too small and easily slips out of buttonhole use 26L	APPROVED?	YES NO
OTHER NOTES:	_____	APPROVED?	YES NO
ACTION:	SAMPLE APPROVED AS IS	REQUEST NEW SAMPLE WITH ABOVE CHANGES	
DATE APPROVAL OR REQUEST COMMUNICATED:	6/29/2022		

TYPE OF SAMPLE:	Second prototype	DATE SAMPLE RECEIVED:	7/7/2022
FIT NOTES:	_____	APPROVED?	YES NO

CONSTRUCTION NOTES:	_____	APPROVED?	YES NO

MATERIALS NOTES:	_____	APPROVED?	YES NO
OTHER NOTES:	_____	APPROVED?	YES NO
ACTION:	SAMPLE APPROVED AS IS	REQUEST NEW SAMPLE WITH ABOVE CHANGES	
DATE APPROVAL OR REQUEST COMMUNICATED:	7/8/2022		

TYPE OF SAMPLE:	_____	DATE SAMPLE RECEIVED:	_____
FIT NOTES:	_____	APPROVED?	YES NO

CONSTRUCTION NOTES:	_____	APPROVED?	YES NO

MATERIALS NOTES:	_____	APPROVED?	YES NO
OTHER NOTES:	_____	APPROVED?	YES NO
ACTION:	SAMPLE APPROVED AS IS	REQUEST NEW SAMPLE WITH ABOVE CHANGES	
DATE APPROVAL OR REQUEST COMMUNICATED:	_____		